

January 15, 2013

Akron Metropolitan Area Transportation Study

806 CitiCenter
146 S. High Street
Akron, Ohio 44308

RE: Connecting Communities Planning Grant

Attn: Ms. Heather Davis Reidl:

On behalf of the City of Barberton, we respectfully submit this Connecting Communities Planning Grant Application offered by Akron Metropolitan Area Transportation Study (AMATS).

The City of Barberton previously submitted an application for this grant opportunity and we are confident that the submittal contained herewith further communicates the City's vision and plan for implementing this grant. We strongly believe that our community connector project is a great fit for this grant. We hope that the information in the attached application provides a clear understanding of the challenges that Barberton is actively working to address in moving forward with both short term and long term goals. These challenges include improvements needed to urban design and transportation mobility that have been compromised over decades as a result of the development occurring along the rail and waterway corridors in the City. We feel that good community and transportation planning which is currently underway is obtainable and with further support through this grant will embody the goals and objectives of the Connecting Communities grant program.

Your assistance and consideration for this grant opportunity is greatly appreciated.

Sincerely,



Russell R. Critelli, PE, PMP
VP – Transportation

Cc: Curtis Baker, Planning Administrator, AMATS
Honorable William B. Judge, Mayor – City of Barberton



Connecting Communities **PLANNING GRANT**

City of Barberton A North-South Community Connection Plan for Van Buren Avenue South and 2nd Street Southwest



January 2013

Connecting Communities Planning Grant Application

1. Applicant/Sponsor (Implementing Governmental Agency Only).

Community/Agency	City of Barberton
Contact Person	Mayor William B. Judge
Project Manager	Joseph Stefan, Assistant Planning Director
Phone Number	(330) 848-6719
Fax Number	(330) 848-6663
Email Address	Wjudge@cityofbarberton.com
Mailing Address	576 West Park Avenue Barberton Ohio 44203

2. Project Co-Sponsor (If applicable. Please indicate which agency and contact person will be the lead.)

Community/Agency	N/A
Contact Person	N/A
Phone Number	N/A
Fax Number	N/A
Email Address	N/A
Mailing Address	N/A

3. Planning Study Summary

The City of Barberton is moving forward with short and long term plans to provide community unity and cohesion, promote economic opportunities, enhance quality of life and develop long term sustainability. The City's north side contains the downtown area and beautiful Lake Anna recreational area as well as residential developments, commercial and public facilities (schools and YMCA). The south side also includes large residential developments and land conservations / park areas. The City of Barberton's economic base, involving thriving light and heavy industries, lies between these two areas and creates barriers to community connectivity that inhibit mobility and growth.

Unifying the residential neighborhoods with the downtown area is important in order to establish a cohesive identity and a sense of place for all portions of the city as well as contributing to the success of the downtown businesses. Additionally, the City desires to create an environment where the neighborhoods, downtown and industrial uses can not only coexist, but also thrive.

Through the efforts of this Planning Study, planned improvements of Van Buren Avenue South and 2nd Street SW can overcome the barriers that currently divide the City as well as contribute to the City's short and long term planning initiatives that are defined in the City of Barberton's Comprehensive Master Plan. Planned improvements include enhanced multi-modal features and enhancements consistent with the recommendations of the Connecting Communities Planning Grant. The Planning Study will evaluate redistribution of right-of-way to other users to include pedestrian and bicycle uses in a Complete Streets concept. This redistribution will allow for connectivity to larger regional facilities including Metro RTA routes, Erie Canal Towpath Trail and to other City landmarks and improvements which are, completed, planned and ongoing throughout the City. These improvements represent both public and private investments, further detailing the level of commitment within the Barberton community.

4. Project Map(s):

The City of Barberton connectivity to the region as well as within its own limits is essential to the success of the City's ongoing initiatives to improve quality of life, increase economic opportunities and build an overall sustainable community. From the figures included in Appendix A, it can be shown that the City of Barberton has established short term and long term strategic goals to meeting their plan for the future.

Appendix A

Figure 1 – Regional Map

Figure 2 – Local Map of Study Area

Figure 3 – Detailed Project Area

We also welcome you to please take the opportunity to view the City's Video TourBook at the links below which further shows the City of Barberton's pride in community and leadership vision.

WELCOME MESSAGE:

[http://www.elocallink.tv/clients3/oh/barberton/tourplay.php?movie=baoh2008wel_rev1&spon=wel
come](http://www.elocallink.tv/clients3/oh/barberton/tourplay.php?movie=baoh2008wel_rev1&spon=wel
come)

QUALITY OF LIFE:

<http://www.elocallink.tv/clients3/oh/barberton/tourplay.php?movie=baoh2008qol&spon=qualityo>

PARKS & RECREATION:

[http://www.elocallink.tv/clients3/oh/barberton/tourplay.php?movie=baoh2008pksrec&spon=park
srec](http://www.elocallink.tv/clients3/oh/barberton/tourplay.php?movie=baoh2008pksrec&spon=park
srec)

5. Project Need (10 Points)

- Describe the planning area boundaries and size.

The planning area boundaries as shown in Figure 1 includes the roadway network of Van Buren Avenue and 2nd Street between Hudson Run Road/Snyder Avenue to the south and Wooster Road/Robinson Avenue to the north, approximately 259 acres. These roads represent the north-south connectors between the south area of the city and downtown. The roadway corridors under study involve 3,200 feet on Van Buren Avenue and 3,000 feet on 2nd street located between Wooster Road/Robinson Avenue to the north and Hudson Run Road and Snyder Avenue to the south. This planning area is further detailed herein as integrally apart of a larger study area as shown in Figure 2 which is approximately 744 acres and includes Ward 4 and areas within the downtown CBD.



- Describe the existing transportation and land use issues and define the problems facing the area.

Existing Conditions:

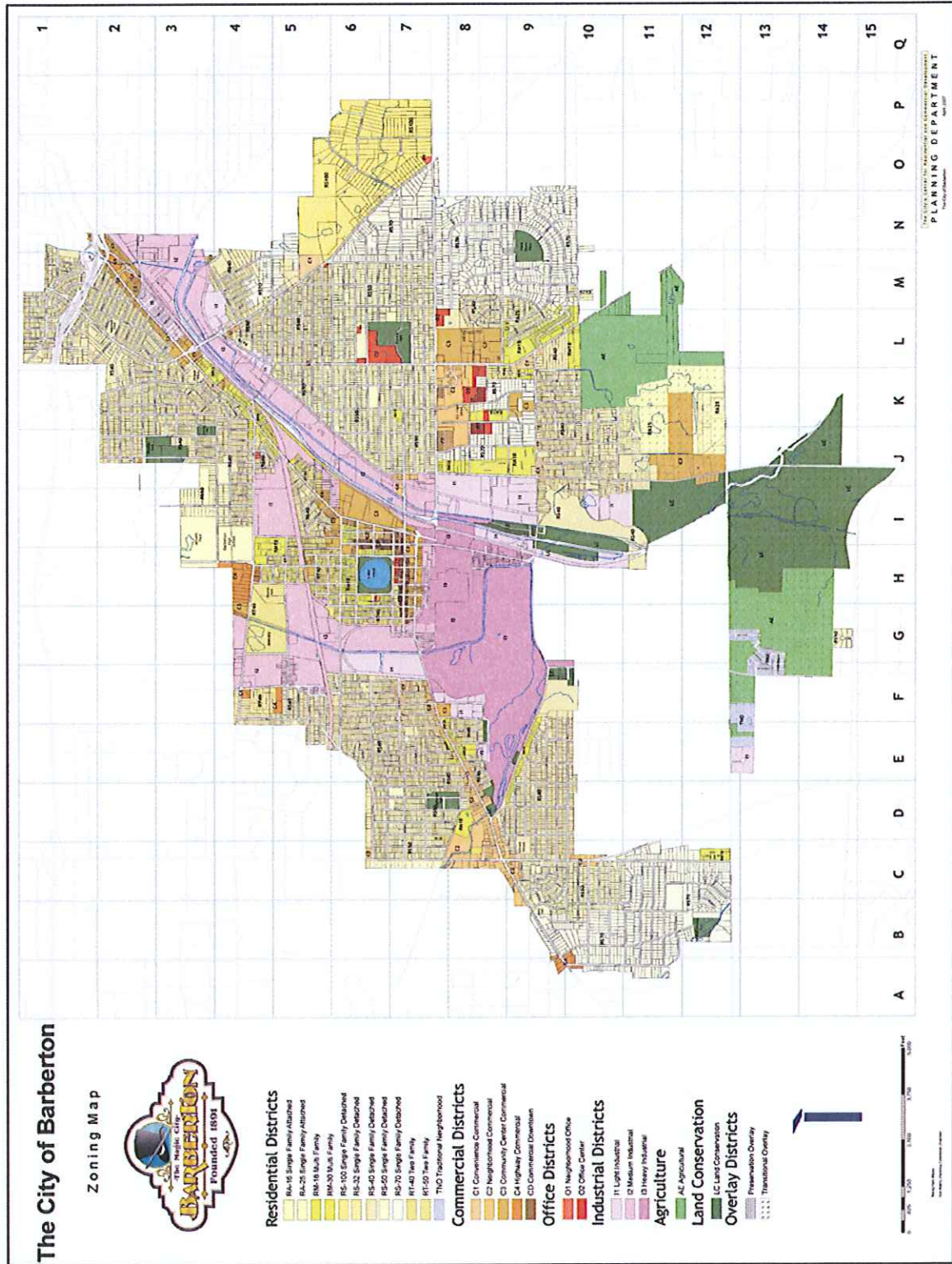
Van Buren Avenue and 2nd Street have a functional classification of Urban Collector, as such should have a local-user focus as opposed to regional connectivity. AMATS identifies that the 2010 traffic is 5,800 vehicles per day for Van Buren Avenue and 3,560 vehicles per day on 2nd Street. The 2nd Street and Van Buren Avenue corridors are the only roadway connecting the south portions of the City to the northern and downtown areas. These corridors can be best described as having only functionality with paved surface for vehicular traffic and sidewalk in poor condition. These roads are not inviting for general public use and do not well serve as City connectors.



Both roads are currently four lanes with sidewalks and have proximity to Ohio & Erie Canal Towpath Trail, yet lack connectivity. This lack of connectivity isolates the attractive downtown area with shops, restaurants and a beautiful recreational area at Lake Anna from the Trail. The roads also lack features of Complete Streets necessary to embrace all users and provide the needed north-south connectivity. These roads also contain a mixed use of businesses, light and heavy industrial as well as residential land uses, however, function only to distribute industrial traffic. Both 2nd Street and Van Buren Avenue from Wooster Road and Robinson Avenue act as a barrier to uniting the city. As a large international company, Babcock & Wilcox located within this study area, generates visitors to the City and they have recognized that these two roads lack the appeal to be considered an entrance or 'gateway' for their visitors.

Lake Anna provides a unique 20 acre city feature for recreation and community gathering. The core downtown surrounds this lake with the historic downtown commercial district along Second Street. Residential developments encircle the downtown with the newest residential development occurred at the southeast and southwest corners of the city. These residential developments are separated from the core city area by a number of barriers including Tuscarawas River and Ohio & Erie Canal that transect the city running north and south. Along these natural barriers, railroads were built as well as industrial developments that created an additional separation between the different neighborhoods of the city. The City's zoning map provided on the following page illustrates this barrier throughout the City.

FIGURE 4 – City Zoning Map



6. Purpose and Outcomes (10 Points)

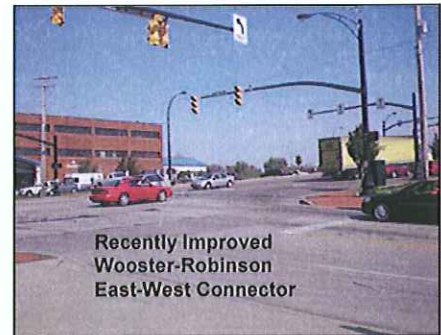
- Define the purpose of the study, and the expected outcomes (access management, streetscapes, pedestrian facilities).

The City of Barberton is pursuing this Connecting Communities Planning Grant to allow for continued progress towards their mission to create a sustainable and livable community. The purpose of the study is to recreate Van Buren Avenue and 2nd Street in a manner that better addresses the City's visions, provides community connectivity, embraces all users and elevates the users experience as well as tie in these streets to other City Wide planned development goals. For example, as noted in Figure 2, ongoing and future projects such as Stark State Campus, Ward 4 Improvements, South and East Downtown Development Target Districts require connectivity to various neighborhoods for success.

The City envisions improvements of the two roadways to consider functional enhancements that may involve block by block treatment in order to best serve both existing businesses, future land use, a traveling public. Strategic elements being considered for this project as well as throughout the City include;

- Redistribution/sharing of the roadway right-of-way for all users; vehicular, pedestrian, bicycle and transit
- Sidewalk – upgrades to make the walking facilities more inviting and including ADA compliance
- Street Trees – for walking comfort and aesthetics that would soften the appearance of the stark industrial areas
- Street Lighting – to improve comfort, security and safety
- Bike Facilities - to provide connectivity to Towpath Trail, downtown, businesses, industries, and residential areas north and south
- Transit – accessibility including stops, bus bays and shelters
- Pedestrian crossings –include appropriate traffic control devices at key intersections to promote pedestrian mobility
- Medians – for traffic calming, safety and aesthetics

The Barberton *Master Plan* (June 2006) identified a number of vital land use and planning elements that support this project. Specifically, the *Master Plan* recognized that there are natural and unnatural barriers to the north-south connectivity involving Tuscarawas River, railroads, large area of industrial land and limited north-south street to serve all users. The *Master Plan* specifically stated: "Unifying the residential neighborhoods with the downtown area is important to establish a cohesive identity and a sense of place for all portions of the city as well as contributing to the success of the downtown businesses."



Recent improvement projects, such as improvements on Wooster Road and Robinson Avenue have helped to break down the barriers involving the east-west connectivity. This project proposes to eliminate the north and south barriers. Connecting the residential areas to South, to CBD, YMCA library and north to Towpath Trail will enhance use of current and future land uses and add more sustainability and quality of life to the residents of the city. Additional benefits include enhanced opportunity for economic growth through attraction of new businesses and industries. Barberton has good connectivity to Akron via I-77 and I-76 as shown in Figure 3 which enhances the economic potential for the City.

7. Connecting Communities Principles (20 Points)

- **Discuss how the proposed project addresses one or more of the Connecting Communities recommendations.**

The proposed study will incorporate several Connecting Communities recommendations including; improved pedestrian access and mobility within the corridor and to other locations within the Study Area, adding dedicated bike signing and lanes, enhancing public transit service including rider platforms, community cohesion from south-north to tie into east-west, integrating sustainable design into streetscape improvements, and improving planning coordination through stakeholder involvement and outreach.

- **Explain how the proposed project will improve transportation choices, such as bicycle, pedestrian, or public transportation, and how it will incorporate complete streets principles.**

The study will incorporate multimodal features including balancing the roadway right-of-way for all users; vehicular, pedestrian, bicycle and transit. The Van Buren Avenue and 2nd Street corridors will be evaluated for bicycle facilities including bike lanes, sharrows or a multi-use path. Connectivity to the Towpath Trail is feasible at the immediate south end of the project area with a trail head located off of Snyder Avenue. Providing this connectivity will encourage cyclist to access the City and downtown for recreational and tourism purposes and furthermore will promote local and regional bicycle mobility as a transportation choice. Metro RTA has routes on Van Buren Avenue and on Wooster Road/Robinson Avenue. These routes have direct proximity to the project area and connect residential, educational and employment areas between Barberton and Akron. As a stakeholder, Metro RTA will be engaged in the study to evaluate route, stops and transit center needs for project area to enhance transit usage.

- **Describe how the proposed project will integrate land use and transportation in a way the enhances the surrounding community.**

The residents who live near the project area and who are involved in frequent travel on these corridors have repeatably expressed a desire to make these roads friendlier, more inviting, more accessible for all users and more aesthetically pleasing. The intent of the study is to develop a plan that marries the needs of the community with existing and future commercial/industrial developments. As noted in Figure 2, Stark State Campus is located on the north side of downtown and connectivity to this site is vital in for its' success. This project will contribute to bringing cohesion from north to south and enhance the opportunity for access and mobility to this facility. This benefit will be realized for access to other community wide improvements noted.

- **Explain how the proposed project will enhance economic competitiveness**

Businesses exploring Barberton for opportunities continually express the desire locations that offer a sense of place as well as proximity to interstate access. Barberton has access to I-76 to the north and I-77 to the east. Land is available for businesses in the project area. This area, located between the downtown and the residential developments on both the north and south sides of the City, has good redevelopment potential. Developing a plan that creates an environment that embraces the community and celebrates industry is vital to retaining existing businesses, encouraging expansion of these existing businesses and attracting new businesses and jobs to the community. Concepts that are part of the *Master Plan* and subsequently this project specific plan *include*:

Connecting Communities **PLANNING GRANT**

- Pedestrian facility planning that will connect the residential areas to the south to community areas to the downtown areas to the north
- Bikeway planning with connectivity to the Towpath Trail
- Transit coordination to make transit more accessible, attractive and convenient
- Aesthetics designs that celebrate thriving businesses and industrial uses and create an inviting atmosphere for all users.
- Enhanced economic vitality through the creation of desirable areas to retain, expand and attract business and industries.
- Develop funding opportunities including public-private partnerships to bring the planning concepts to reality

8. Public Involvement and Coordination (5 Points)

- **Define your preferred approach to engaging the public in the planning process.**

The stakeholder involvement process is expected to include an initial fact-finding meeting to identify project goals, priorities, issues and opportunities. Much of this will be a continuation from the City's Comprehensive Masterplan. From this input, the preliminary conceptual plan will be developed. Project phasing and priorities will be provided with planning level cost estimates to a second stakeholder meeting in which feedback will be solicited for refinement of the plan. The final meeting will re-invite the stakeholders and also provide a public format for the plan presentation. The final planning report will incorporate the stakeholder and community comments. Initial support for pursuing this study has been received from various stakeholders (See attached Letters of Support)

- **Identify key stakeholders who you believe will be active participants in the planning process.**

The City of Barberton will engage the following businesses, groups and industries into the planning process:

- **AMATS** to provide oversight for the Connecting Communities
- **City Planning** to provide land use planning input
- **City Economic Development Leaders** to identify barriers to business expansion
- **City Engineering** to provide details to roadway and utility barriers
- **Chamber of Commerce** to identify elements desirable to attract industries
- **Downtown Association** to coordinate their ideas and goals
- **Metro RTA** to evaluate existing and future transit routes, stops, needs, etc
- **Barberton schools** to coordinate school routes (bus and pedestrian)
- **Park Agencies** to coordinate accessibility to the Towpath Trail, Lake Anna and other park areas
- **Babcock and Wilcox** as a major land user to coordinate their planning and expansion with public-private partnership opportunities
- **Other community businesses** that would benefit from the user enhancement
- **Neighborhood groups** to provide input pertaining to their connectivity and mobility

9. Capacity and Implementation (10 Points)

Explain the community project manager's capacity to participate in the planning process, including implementation upon study completion.

- **Describe how your community/agency will implement this planning study.**
- **List activities/documents, if any, that demonstrate prior commitment to addressing the study area needs.**
- **Letters of Support (Included)**

The final plan is expected to involve a number of implementation phases for the implementation of the Complete Streets plan. Project costs and funding opportunities for the phases will be identified. Having the plan in place will put the City in better position for state and federal transportation, Brownfield and Jobs Ready Grants. Improving the corridors with both short term implementations toward a long term vision will make the area more attractive for attracting, retaining and expanding businesses and industries. Additionally, the City will explore opportunities for public-private partnerships. Some funding opportunities might include:

1. Transportation Funds can be explored for various public roadway portions of the project and include:
 - Safety Funds –Wooster Road, Robinson Avenue and Van Buren Avenue have been identified on AMAT's safety high crash locations over the years. Projects that can document a safety return have potential for safety funding
 - Congestion Mitigation and Air Quality funds are could be considered for projects that improve traffic flow and can provide a documented reduction in emissions. This might include lane changes and/or signalization
 - Enhancement Funds for aesthetic or bikeway elements
 - Other surface transportation opportunities
2. Economic and Development Grants based on job creation with good potential with Babcock and Wilcox present on the corridor and being in an expansion mode in recent years. These grants would have application to roadway improvements associated with a development or a site for development or redevelopment in the project area. The improvement of the transportation system with a Complete Streets concept would make the area more attractive for businesses and favor grant opportunities such as:
 - The Ohio Development Service Agency (formerly Ohio Department of Development)
 - Brownfield Grants for site remediation for redevelopment
 - Jobs Ready Site
3. Public – Private Partnerships will be explored for improvements that direct and immediate benefit to any of the major users. The City does have active Community Reinvestment, Enterprise Zone and Tax Increment Financing programs for private and public Improvements.

Date Saved: 1/15/2013 2:22:15 PM
Path: W:\Opportunities\2011\OP11200-1399\OP11283 - B250 - Barberton Complete Streets Connecting Communities Planning Grant on 2nd Street Barberton\GIS\op11283_regional.mxd

C O P L E Y

Legend

- METRO Bus Route
- Trails
- Public Park
- Study Area
- Jurisdictions

BARBERTON RESERVOIR & FUTURE PERIMETER TRAIL

FUTURE PIGEON WOLF CREEK TRAIL CONNECTING BARBERTON TO COPLEY

N O R T O N

A K R O N

LAKE DOROTHY PARK

NESMITH LAKE

B A R B E R T O N

FIRESTONE METRO PARK

21

Project Area

PORTAGE LAKES STATE PARK

C O V E N T R Y

SILVER CREEK METRO PARK

619

N E W F R A N K L I N

The Connecting Communities Grant will allow the City of Barberton to continue their efforts to improve connectivity within the project study area and to regional assets such as the Silver Creek MetroPark, Portage Lakes, and surrounding communities. An example of other community wide planning initiatives that compliment this effort include the future improvement for the Pigeon Wolf Creek Trail. This north-south extension will provide access to Copley and to the City of Barberton's reservoir where a future perimeter trail is planned.

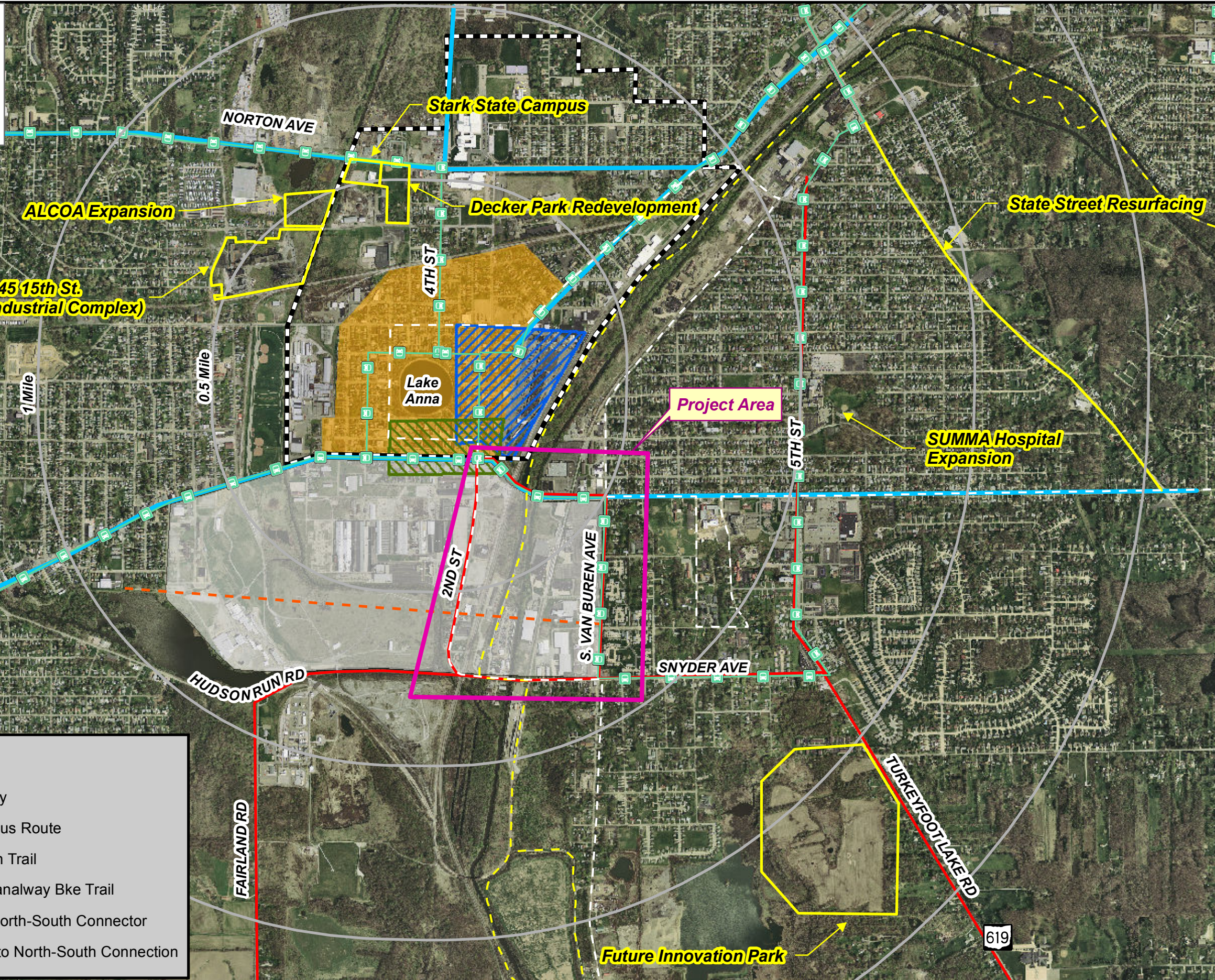
Mannik & Smith
The Group, Inc.
1800 Indian Wood Circle
Maumee, Ohio 43537
Civil Engineering, Surveying and Environmental Consulting
MAUMEE ♦ CLEVELAND ♦ MONROE ♦ CANTON
(419) 891-2222
Fax: (419) 891-1595

Regional Map AMAT Connecting Communities City of Barberton, Ohio

Notes: The photography, dated April 2011 is provided by OGRIP as part of the Statewide Imagery Program.

0 1,500 3,000 Feet

As shown in this exhibit, Barberton has several improvement projects in the planning stage, in progress or completed which includes both public and private investments. These projects are a reflection of the City's Comprehensive Masterplan which included community wide stakeholders. 'Target Areas' and corresponding 'Target Area Development Standards' are established for re-use, redevelopment and new development incorporating land-use guidelines, accessibility, connectivity, and sustainability.



Legend

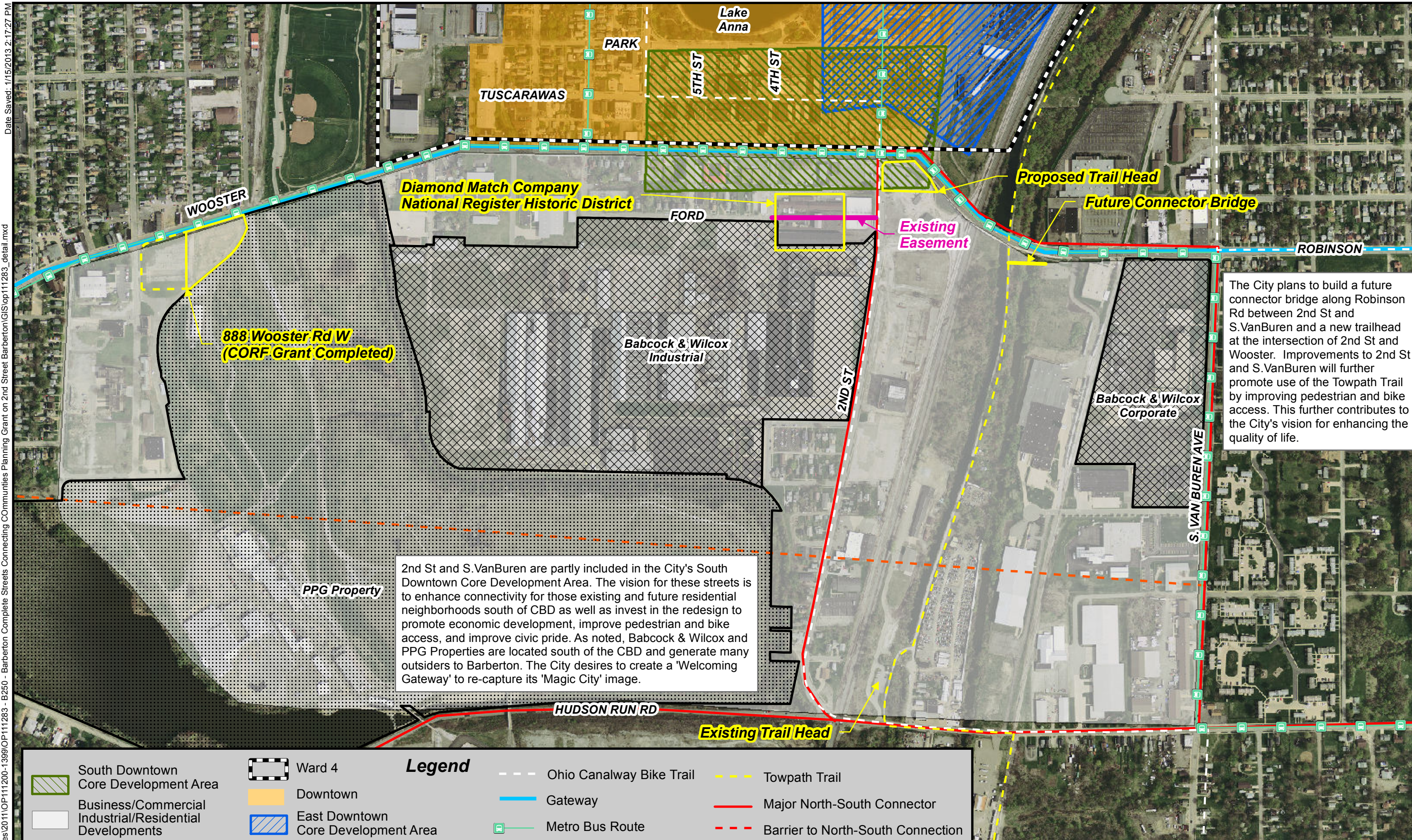
- Ward 4
- Downtown
- East Downtown Core Development Area
- South Downtown Core Development Area
- Business/Commercial Industrial/Residential Developments
- Gateway
- Metro Bus Route
- Towpath Trail
- Ohio Canalway Bke Trail
- Major North-South Connector
- Barrier to North-South Connection

Mannik & Smith
 The Group, Inc.
 1800 Indian Wood Circle
 Maumee, Ohio 43537
 (419) 891-2222
 Fax: (419) 891-1595
 Civil Engineering, Surveying and Environmental Consulting
 MAUMEE ♦ CLEVELAND ♦ MONROE ♦ CANTON

Local Area
AMAT Connecting Communities
City of Barberton, Ohio
2nd Street SW Corridor & Van Buren Ave. Corridor




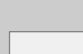







Notes: The photography, dated April 2011 is provided by OGRIP as part of the Statewide Imagery Program.

0 750 1,500 Feet



The City plans to build a future connector bridge along Robinson Rd between 2nd St and S. VanBuren and a new trailhead at the intersection of 2nd St and Wooster. Improvements to 2nd St and S. VanBuren will further promote use of the Towpath Trail by improving pedestrian and bike access. This further contributes to the City's vision for enhancing the quality of life.

2nd St and S. VanBuren are partly included in the City's South Downtown Core Development Area. The vision for these streets is to enhance connectivity for those existing and future residential neighborhoods south of CBD as well as invest in the redesign to promote economic development, improve pedestrian and bike access, and improve civic pride. As noted, Babcock & Wilcox and PPG Properties are located south of the CBD and generate many outsiders to Barberton. The City desires to create a 'Welcoming Gateway' to re-capture its 'Magic City' image.


Legend	
	South Downtown Core Development Area
	Downtown
	East Downtown Core Development Area
	Business/Commercial Industrial/Residential Developments
	Ward 4
	Metro Bus Route
	Major North-South Connector
	Ohio Canalway Bike Trail
	Towpath Trail
	Barrier to North-South Connection
	Gateway

Mannik & Smith
 The Group, Inc.
 1800 Indian Wood Circle
 Maumee, Ohio 43537
 (419) 891-2222
 Fax: (419) 891-1595
 Civil Engineering, Surveying and Environmental Consulting
 MAUMEE ♦ CLEVELAND ♦ MONROE ♦ CANTON

Detail
AMAT Connecting Communities
City of Barberton, Ohio
2nd Street SW Corridor & Van Buren Ave. Corridor

Notes: The photography, dated April 2011 is provided by OGRIP as part of the Statewide Imagery Program.

0 250 500 Feet





September 26, 2012

Akron Metropolitan Area Transportation Study
806 CitiCenter
146 South High Street
Akron, Ohio 44308

Attn: Ms. Heather Davis Reidl

Re: Connecting Communities Planning Grant

Dear Ms. Davis Reidl;

We respectfully submit the City of Barberton's Connecting Communities Planning Grant Application.

We are excited to see this grant opportunity offered by AMATS and believe that our community connector project is a great fit for this grant. We hope that the information in the attached application provides a clear understanding of the transportation challenges in the City of Barberton. These challenges including good urban design and transportation mobility have developed over decades as a result of the development occurring along the rail and waterway corridors in the city. We feel that with the aid of good community and transportation planning, an ideal solution involving a Complete Streets concept is obtainable and will embody the goals and objectives of the Connecting Communities grant program.

Your assistance and consideration for this grant opportunity is greatly appreciated.

Sincerely,

William B. Judge M.A., M.B.A.

Mayor

City of Barberton

William B. Judge, Mayor
576 West Park Avenue • Barberton, Ohio 44203
Phone: 330-848-6719 • Fax: 330-848-6663
www.cityofbarberton.com



City of Barberton

Founded 1891

September 26, 2012

Akron Metropolitan Area Transportation Study
806 CitiCenter
146 South High Street
Akron, Ohio 44308

Attn: Grants Committee

Re: Connecting Communities Planning Grant

Dear Grants Committee;

We respectfully submit the City of Barberton's Connecting Communities Planning Grant Application.

We are excited to see this grant opportunity offered by AMATS and believe that our community connector project is a great fit for this grant. We hope that the information in the attached application provides a clear understanding of the transportation challenges in the City of Barberton. These challenges including good urban design and transportation mobility have developed over decades as a result of the development occurring along the rail and waterway corridors in the city. We feel that with the aid of good community and transportation planning, an ideal solution involving a Complete Streets concept is obtainable and will embody the goals and objectives of the Connecting Communities grant program.

Your assistance and consideration for this grant opportunity is greatly appreciated.

Sincerely,

A handwritten signature in blue ink that reads "William B. Judge".

William B. Judge M.A., M.B.A.

Mayor

City of Barberton

William B. Judge, Mayor

576 West Park Avenue • Barberton, Ohio 44203

Phone: 330-848-6719 • Fax: 330-848-6663

www.cityofbarberton.com





October 3, 2012

Mayor William B. Judge
City of Barberton
576 West Park Ave
Barberton, Ohio 44203

Dear Mayor Judge,

The Barberton Planning Commission is pleased to support Barberton's Connecting Communities Planning Grant. This proposed study focuses on several key corridors that directly affect our company and the downtown area. A North-South Community Connection Plan for Van Buren Avenue South and Second Street Southwest is vital to the future redevelopment of this area and the downtown area which it connects to.

As you know it is a major road connecting to the downtown area and is busy with cars, pedestrians and bicycles travelling to everyday amenities necessary for quality of life: housing, employment, retail, government services, recreation, and education.

A Connecting Communities planning study will identify the necessary infrastructure to accommodate alternative modes of transportation, which will benefit both our residents and businesses. This information will assist in future compressive transportation planning and increase regional connectivity. We look forward to participating in the Connecting Communities Planning Study.

Sincerely,

Ron Mollric
Chairman,
Barberton Planning Commission

William B. Judge, Mayor
576 West Park Avenue • Barberton, Ohio 44203
Phone: 330-848-6719 • Fax: 330-848-6663
www.cityofbarberton.com



October 2, 2012

Mayor William B. Judge
City of Barberton
576 West Park Ave
Barberton, Ohio 44203

Dear Mayor Judge,

I am very pleased to send you this letter of support regarding the city of Barberton's Connecting Communities Planning Grant application. This project will contribute to revitalized urban living and foster a vital connection within our community. This proposed study focuses on several key corridors that directly affect our company and the downtown area. A North-South Community Connection Plan for Van Buren Avenue South and Second Street Southwest is vital to the future redevelopment of this area and the downtown area which it connects to.

The Foundation's 2011-2020 Strategic Plan Economic Development Action Committee recommended strongly that place making, image enhancement of our corridors, and development of community connection projects are sorely needed to improve the quality of life for Barberton residents and to restore our urban vitality.

Many of our stakeholder businesses, their employees and customers utilize this corridor to travel to. As you know it is a major road connecting to the downtown area and is busy with cars, pedestrians and bicycles travelling to everyday amenities necessary for quality of life: housing, employment, retail, government services, recreation, and education.

A Connecting Communities Planning Study will identify the necessary infrastructure to accommodate alternative modes of transportation, which will benefit both our residents and businesses. This information will assist in future compressive transportation planning and increase regional connectivity. We look forward to participating in the Connecting Communities Planning Study.

Sincerely,

A handwritten signature in blue ink that reads "Larry J. Lallo". The signature is written in a cursive style.

Larry J. Lallo
Executive Director
Barberton Community Foundation

September 26, 2012

Mayor William B. Judge
City of Barberton
576 West Park Ave
Barberton, Ohio 44203

Dear Mayor Judge,

The Babcock & Wilcox Co. is pleased to support Barberton's Connecting Communities Planning Grant. This proposed study focuses on several key corridors that directly affect our company and the downtown area. A North-South Community Connection Plan for Van Buren Avenue South and Second Street Southwest is vital to the future redevelopment of this area and the downtown area which it connects to.

Many of The Babcock & Wilcox Co. employees and customers utilize this corridor to travel to and from our business. As you know it is a major road connecting to the downtown area and is busy with cars, pedestrians and bicycles travelling to everyday amenities necessary for quality of life: housing, employment, retail, government services, recreation, and education.

A Connecting Communities planning study will identify the necessary infrastructure to accommodate alternative modes of transportation, which will benefit both our residents and businesses. This information will assist in future compressive transportation planning and increase regional connectivity. We look forward to participating in the Connecting Communities Planning Study.

Sincerely,



G. Reese Foote III
General Manager
The Babcock & Wilcox Co.
Nuclear Operations Group



September 26, 2012

Mayor William B. Judge
City of Barberton
576 West Park Ave.
Barberton, Ohio 44203

Dear Mayor Judge,

New Horizon Federal Credit Union is pleased to support Barberton's Connecting Communities Planning Grant. This proposed study focuses on several key corridors that directly affect our credit union and the downtown area. A North-South Community Connection Plan for Van Buren Avenue South and Second Street Southwest is vital to the future redevelopment of this area and the downtown area which it connects to.

ALL of New Horizon Federal Credit Union's employees and members utilize this corridor to travel to and from our credit union. As you know it is a major road connecting to the downtown area and is busy with cars, pedestrians and bicycles travelling to everyday amenities necessary for quality of life: housing, employment, retail, government services, recreation, and education.

A Connecting Communities planning study will identify the necessary infrastructure to accommodate alternative modes of transportation, which will benefit both our residents and businesses. This information will assist in future compressive transportation planning and increase regional connectivity. We look forward to participating in the Connecting Communities Planning Study.

Respectfully,

A handwritten signature in blue ink that reads "Michael T. Heidenreich".

Michael T. Heidenreich, AAP
Manager/CEO
New Horizon Federal Credit Union



October 2, 2012

Mayor William B. Judge
City of Barberton
576 West Park Ave
Barberton, Ohio 44203

Dear Mayor Judge,

Metro Parks, Serving Summit County strongly supports Barberton's Connecting Communities Planning Grant. This proposed study focuses on several key corridors that are of importance to Metro Parks. A North-South Community Connection Plan for Van Buren Avenue South and Second Street Southwest is vital to the future redevelopment of this area and the downtown area which it connects to. It also provides important connectivity to the Ohio & Erie Canal Towpath Trail ("Towpath Trail"). The addition of bike lanes and the beautification of Van Buren Avenue will also increase recreational connectivity and improve the overall recreation experience in this area. The Towpath Trail is one of our most popular and heavily utilized park amenities.

A Connecting Communities planning study will identify the necessary infrastructure to accommodate alternative modes of transportation, which will benefit both our residents and businesses. This information will assist in future compressive transportation planning and increase regional connectivity. We look forward to participating in the Connecting Communities Planning Study.

Sincerely,

Keith D. Shy
Director
Metro Parks, Serving Summit County

September 26, 2012

Mayor William B. Judge
City of Barberton
576 West Park Ave
Barberton, Ohio 44203

Dear Mayor Judge,

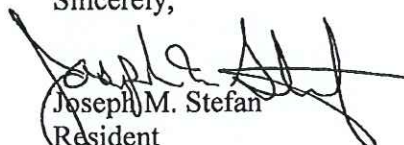
My name is Joseph Stefan and I reside at 63 South Van Buren Ave. I have lived in Barberton for over twenty years and at my current address for the last five. My family and I are also avid walkers and bike riders.

I am pleased to announce my support of Barberton's Connecting Communities Planning Grant. This proposed study focuses on several key areas that directly affect my property and our downtown area. A North-South Community Connection Plan for Van Buren Avenue South and Second Street Southwest is vital to the future redevelopment of this area and the downtown area which it connects to.

Many of my family and friends utilize this corridor to travel to and from the downtown area and to the Ohio Erie Canal Towpath Trail. As you know Van Buren and 2nd St SW is a major road connecting to the downtown area and is busy with cars, pedestrians and bicycles travelling to everyday amenities necessary for quality of life: housing, employment, retail, government services, recreation, and education. Any type of study to assist in finding ways where my children ages 7 and 13, my wife and myself would be able to travel more safely is a study we would support.

A Connecting Communities planning study will identify the necessary infrastructure to accommodate alternative modes of transportation, which will benefit not only me but also my neighbors and local businesses. This information will assist in future compressive transportation planning and increase regional connectivity. My family and I would look forward to participating in the Connecting Communities Planning Study in any way we can.

Sincerely,


Joseph M. Stefan
Resident
63 S. Van Buren Ave.

November 8, 20012

Mayor William Judge
City of Barberton
576 West Park Avenue
Barberton, Ohio 44203

Dear Mayor,

The Barberton Kiwanis (Noon) Organization that represents about 60 members and community volunteers serving our community **endorses the Connecting Communities Grant efforts.**

Our city streets are in terrible condition and our traffic flow is in need of improvement. The long-range prospects of this planning grant may be helpful to solving some of these infrastructure needs in our city.

Thanks for contacting us to weigh in on this idea. Good luck in making transportation in the "Magic City" safer for our residents and visitors.

Sincerely,

A handwritten signature in blue ink that reads "John Hall". The signature is written in a cursive style with a large initial "J".

John Hall
President, Barberton Kiwanis



Ohio & Erie Canalway Coalition

January 4, 2013

Honorable William B. Judge
Mayor
City of Barberton
576 West Park Avenue
Barberton, Ohio
44203

Re: City of Barberton Connecting Communities Planning Grant

Dear Mayor Judge,

Ohio & Erie Canalway Coalition is pleased to support The City of Barberton's Connecting Communities Planning Grant. This proposed study focuses on several key corridors that are a key component of the Summit County Trails Plan and the downtown Barberton area. A North-South Community Connection Plan for Van Buren Avenue South and Second Street Southwest is vital to the future redevelopment of this area and the downtown area which it connects to.

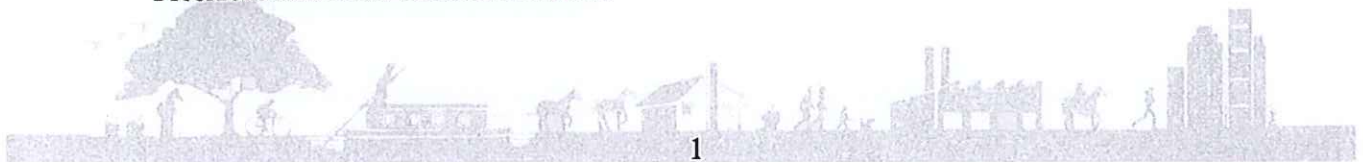
The Connecting Communities planning study will identify the necessary infrastructure to accommodate alternative modes of transportation, which will benefit both our residents and businesses. This information will assist in future compressive transportation planning and increase regional connectivity.

The City of Barberton's Connecting Communities Planning grant project is a key component of the Summit County Trails Plan. Working in partnership with local businesses, corporations, neighborhoods and community partners, The City of Barberton is developing a visionary regional plan that will stimulate community and economic development, improve the quality of life for the citizens of Barberton and build a sustainable community for generations.

We look forward to participating in the Connecting Communities Planning Study and I strongly endorse The City of Barberton's application. If you have any questions, please feel free to contact me at (330) 374-5657.

Sincerely,

Daniel M. Rice
President and Chief Executive Officer





Tom Sawyer
State Senator
28th District
Phone: 614-466-7041
tomsawyer@ohiosenate.gov

Committees:
Finance, Ranking Member
Education, Ranking Member
Energy and Public Utilities

October 17, 2012

Mayor William B. Judge
City of Barberton
576 West Park Ave
Barberton, Ohio 44203

Dear Mayor Judge,

I am pleased to support Barberton's Connecting Communities Planning Grant. This proposed study focuses on several key corridors that directly affect my constituents and the downtown area. A North-South Community Connection Plan for Van Buren Avenue South and Second Street Southwest is important to the future redevelopment of this area and the downtown region to which it connects.

As you know, this is a major road connecting to the downtown area and is busy with cars, pedestrians and bicycles traveling to everyday amenities necessary for a high quality of life: housing, employment, retail, government services, recreation and education.

A Connecting Communities planning study will identify the necessary infrastructure to accommodate alternative modes of transportation, which will benefit residents, visitors, and businesses. This information will assist in future transportation planning and increase regional connectivity.

The great City of Barberton will benefit significantly from this grant, and I am pleased to offer my support in any way possible. Please feel free to contact my office if you have any additional questions or concerns.

Sincerely,

A handwritten signature in cursive script that reads "Tom Sawyer".

Senator Tom Sawyer
District 28

TCS/kab



Representative Zack Milkovich
Ohio State Representative 45th House District

October 19, 2012

Mayor William B. Judge
City of Barberton
576 West Park Ave
Barberton, Ohio 44203

Dear Mayor Judge,

As the State Representative in the district, I am pleased to support Barberton's Connecting Communities Planning Grant. This proposed study focuses on several key corridors that directly affect businesses, residents of the community and the downtown area. A North-South Community Connection Plan for Van Buren Avenue South and Second Street Southwest is vital to the future redevelopment of this area and the downtown area to which it connects.

A North-South Community Connection plan will maximize the ability to utilize this corridor to travel to and from businesses, residential developments and public facilities. As you know it is a major road connecting the downtown area and is busy with cars, pedestrians and bicycles travelling to everyday amenities necessary for quality of life: housing, employment, retail, government services, recreation, and education.

The Connecting Communities Grant is a key component in promoting mobility and growth in the City of Barberton. This funding will serve as a vital stepping stone in our economic recovery by providing the necessary infrastructure to accommodate alternative modes of transportation. It will also serve as a catalyst in creating a much needed link to the public and local businesses in this corridor of the city. With that in mind, I respectfully ask for any and all consideration of this grant proposal. Thank you in advance for your consideration.

Sincerely,

A handwritten signature in black ink that reads "Zack Milkovich".

Zack Milkovich
State Representative, 45th House District

Committees:

Ways and Means
Veterans Affairs

Contact Information:

Office: 614-644-6037
Toll-Free: 1-800-282-0253
FAX: 614-719-6945
Email: district45@ohr.state.oh.us



BARBERTON COMMUNITY DEVELOPMENT
C O R P O R A T I O N

October 5, 2012

Mayor William B. Judge
City of Barberton
576 West Park Avenue
Barberton, Ohio 44203

Dear Mayor Judge,

The Barberton Community Development Corporation is pleased to support Barberton's Connecting Communities Planning Grant. This proposed study focuses on several key corridors that directly affect our company and the downtown area. A North-South Community Connection Plan for Van Buren Avenue South and Second Street Southwest is vital to the future development of this area and the downtown area which it connects to.

Many of the Barberton Community Development Corporations' clients utilize this corridor to travel to and from our business. As you know it is a major road connecting to the downtown area and is busy with cars, pedestrians and bicycles travelling to everyday amenities necessary for quality of life: housing, employment, retail, government services, recreation and education.

A Connecting Communities planning study will identify the necessary infrastructure to accommodate alternative modes of transportation, which will benefit both our residents and businesses. This information will assist in future compressive transportation planning and increase regional connectivity. We look forward to participating in the Connecting Communities Planning Study.

Sincerely,

Scott Wagner
Executive Director
Barberton Community Development Corporation



The Honorable William B. Judge, Mayor
City of Barberton
576 West Park Ave
Barberton, OH 44203

4 December 2012

Dear Mayor Judge,

I am writing in support of Barberton's Connecting Communities Planning Grant. This proposed study focuses on several key corridors that directly affect the livelihood of the downtown Barberton area. The North-South Community Connection Plan for Van Buren Avenue South and Second Street Southwest is vital to the future redevelopment of the area and downtown Barberton.

Many of Barberton's residents utilize this corridor for travel and business needs. As you know, it is a major road connecting to the downtown area and is normally busy with cars, pedestrians and bicycles. People come via those modes of transportation to take advantage of the many amenities offered all along the route including; housing, employment, retail, government services, recreation, and education opportunities.

A Connecting Communities planning study will identify ways to best utilize the assets that the city currently has, to its fullest potential. This study will provide a map to redevelop these vital corridors so that residents from Barberton and the surrounding area can be directed through the city in a strategic way that brings awareness to key features in the local economy. In addition the study will address infrastructure needs to accommodate alternative modes of transportation within this corridor so that it will be travel friendly. The study will benefit both residents and businesses in the City of Barberton. The information it reveals will assist in future transportation planning and increase regional connectivity. These are all to the benefit of the City.

Thank you for supporting Barberton's Connecting Communities Planning Grant. If you have any questions, please contact me at 614-466-4823 or Frank.LaRose@OhioSenate.gov.

Yours in service,

A handwritten signature in blue ink that reads "Frank LaRose".

Senator Frank LaRose
Serving Ohio's 27th Senate District



October 18, 2012

Mayor William B. Judge
City of Barberson
576 West Park Ave.
Barberson, OH 44203

Dear Mayor Judge,

South Summit Chamber of Commerce is pleased to support Barberson's Connecting Communities Planning Grant. This proposed study focuses on several key corridors that directly affect our businesses and the downtown area. A North-South Community Connection Plan for Van Buren Avenue South and Second Street Southwest is vital to the future redevelopment of this area and the downtown area which it connects.

Many of South Summit Chamber of Commerce member employees and customers utilize this corridor traveling to and from their business. As you know this is a major connector to the downtown area and is busy with cars, pedestrians and bicycles traveling to everyday amenities necessary for quality of life: housing, employment, retail, government services, recreation, and education.

A Connecting Communities Planning Study will identify the necessary infrastructure to accommodate alternative modes of transportation, which will benefit both our residents and businesses. This information will assist in future comprehensive transportation planning and increase regional connectivity. We look forward to participating in the Connecting Communities Planning Study.

Sincerely,



Joe Fazek
South Summit Chamber of Commerce