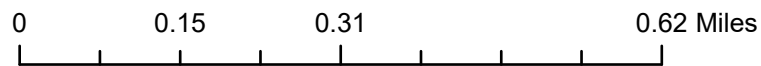
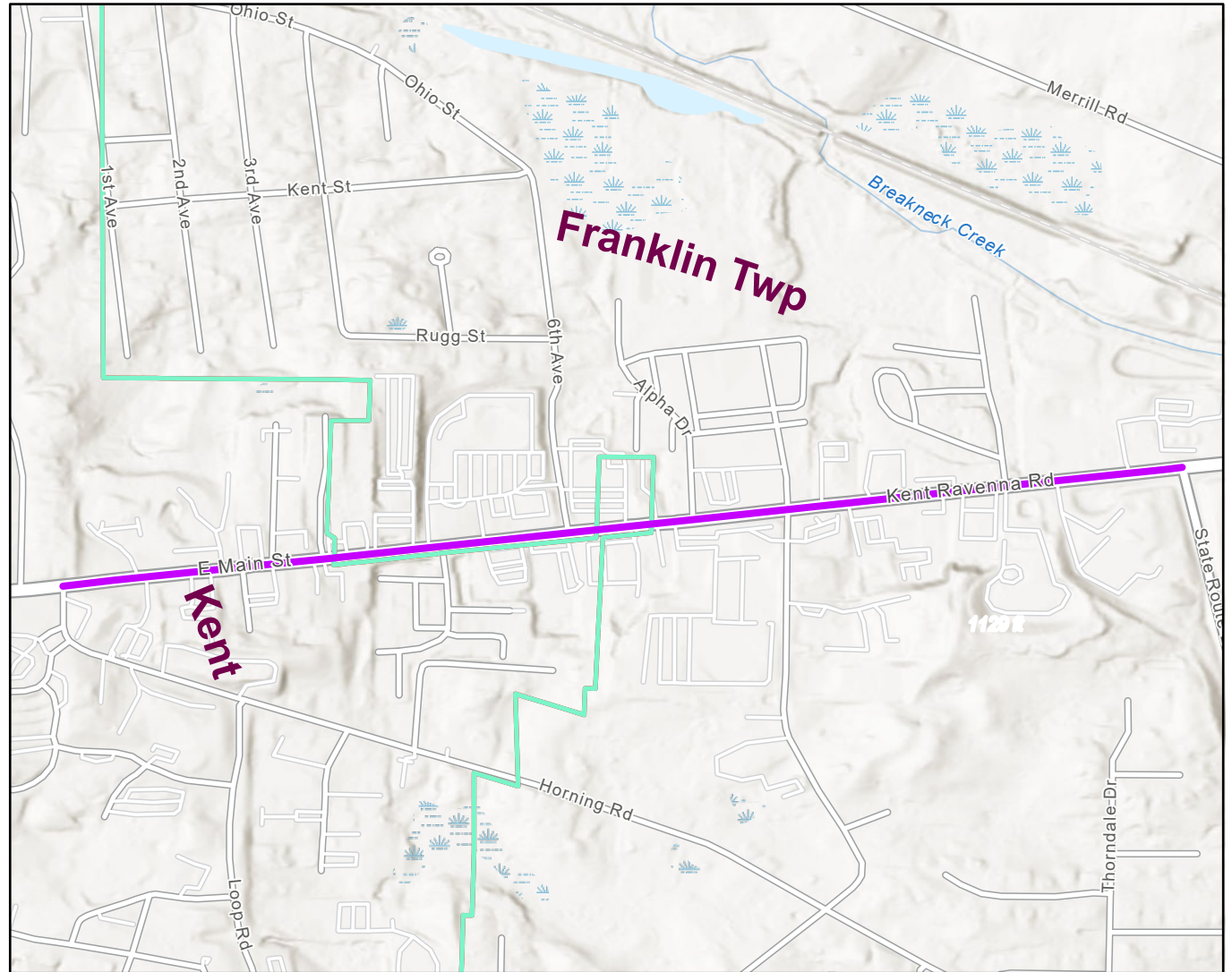


CONNECTING COMMUNITIES

2020 Planning Grant

Study Area Map

-  Study Area
-  Kent and Franklin Twp Shared Boundary



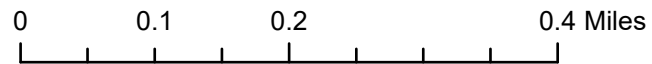
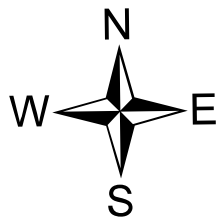
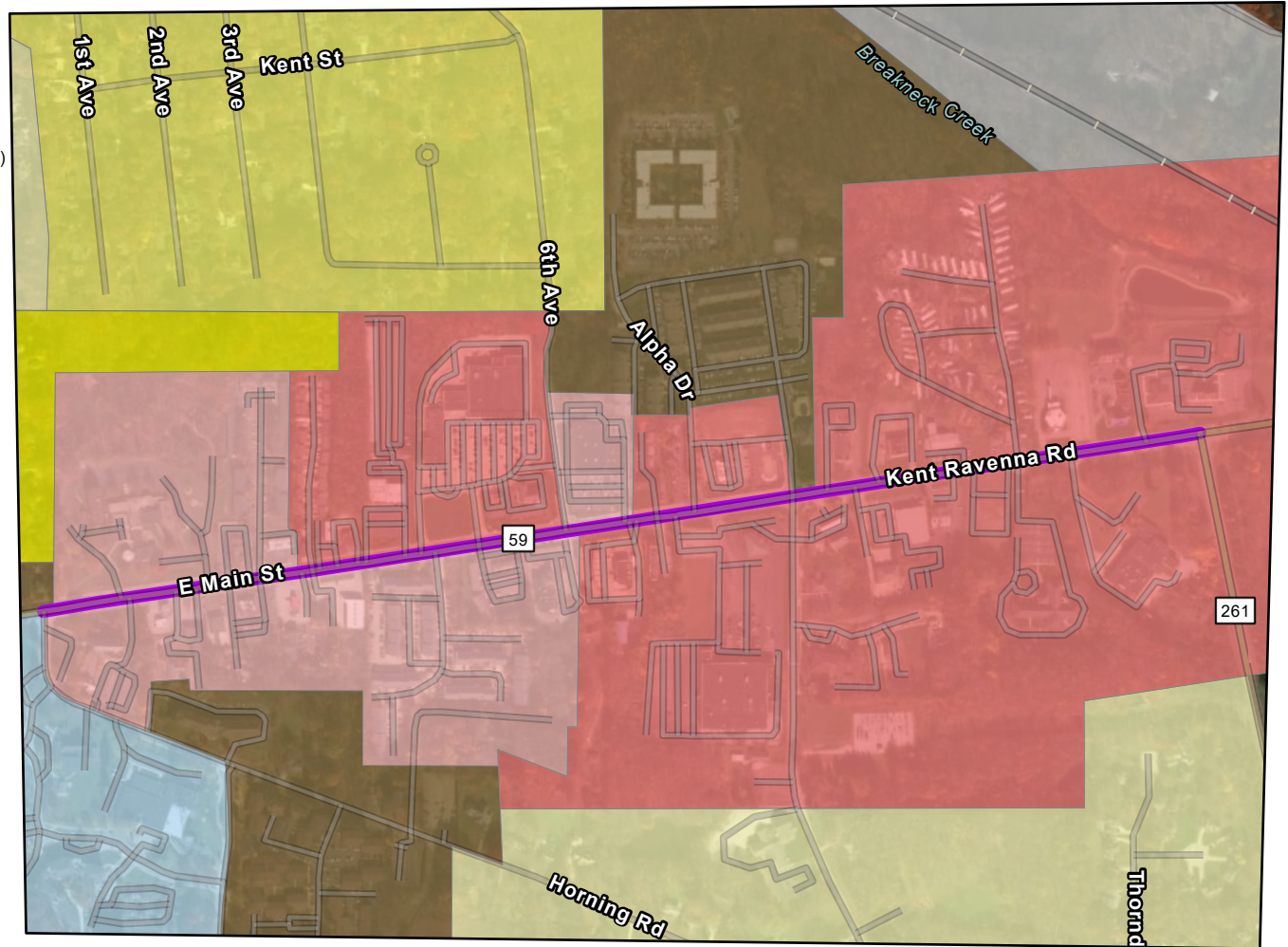
Akron Metropolitan Area Transportation Study

CONNECTING COMMUNITIES

2020 Planning Grant

Zoning Map

- C-1 (Local Commercial)
- C-R (Commercial-High Density Multi-Family Residential)
- O-C (Open Space Conservation)
- R-1 (Low Density Suburban Residential)
- R-1A (Medium Density Suburban Residential)
- R-2 (Medium Density Residential)
- R-4 (Multi-family Residential)
- U (University)
- Study Area Corridor






Akron Metropolitan Area Transportation Study

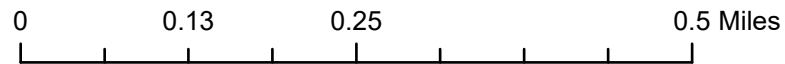
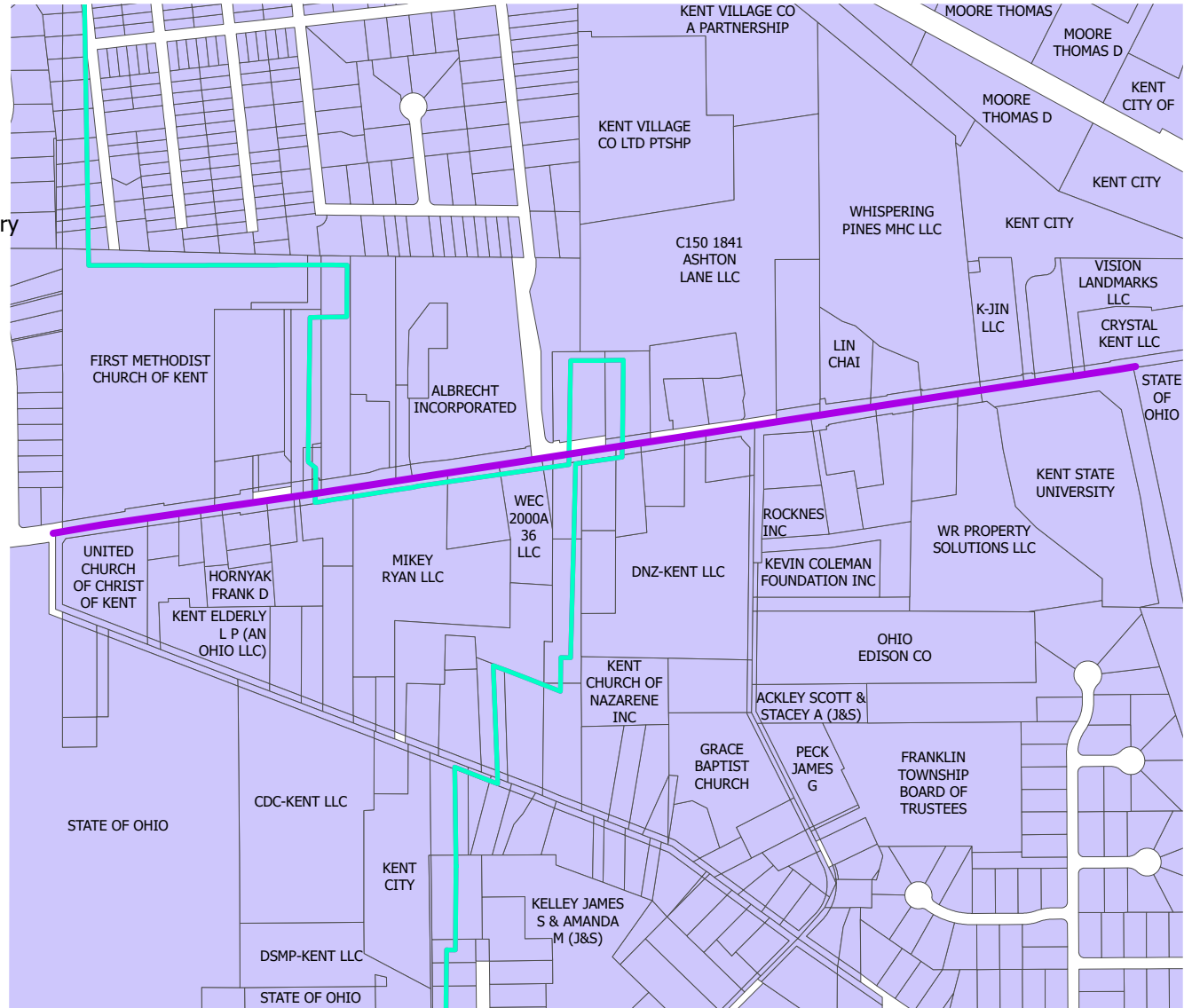
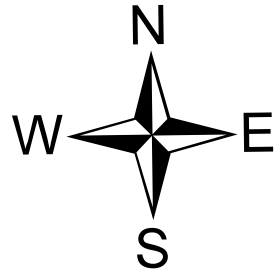


CONNECTING COMMUNITIES

2020 Planning Grant

Parcel Ownership Map

-  Study Area
-  Parcels
-  Kent and Franklin Twp Shared Boundary

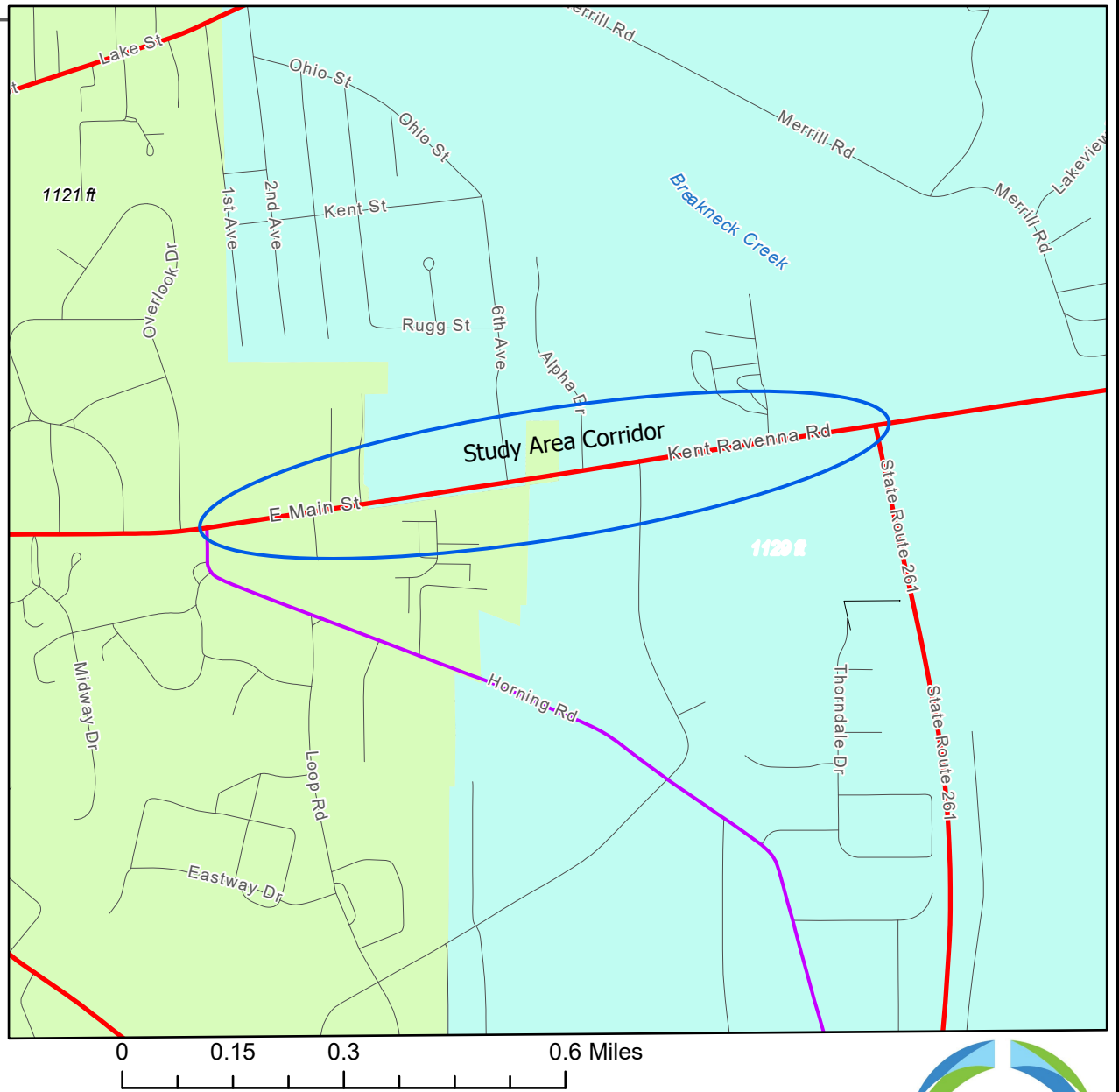
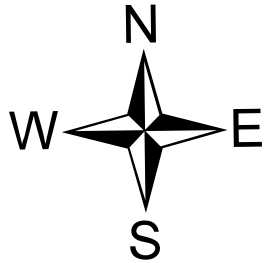


CONNECTING COMMUNITIES

2020 Planning Grant

Functional Classification of Roads

- Arterials
- Collectors
- Locals
- Kent
- Franklin Township



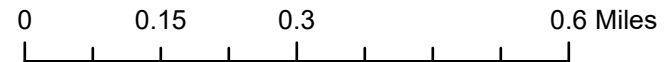
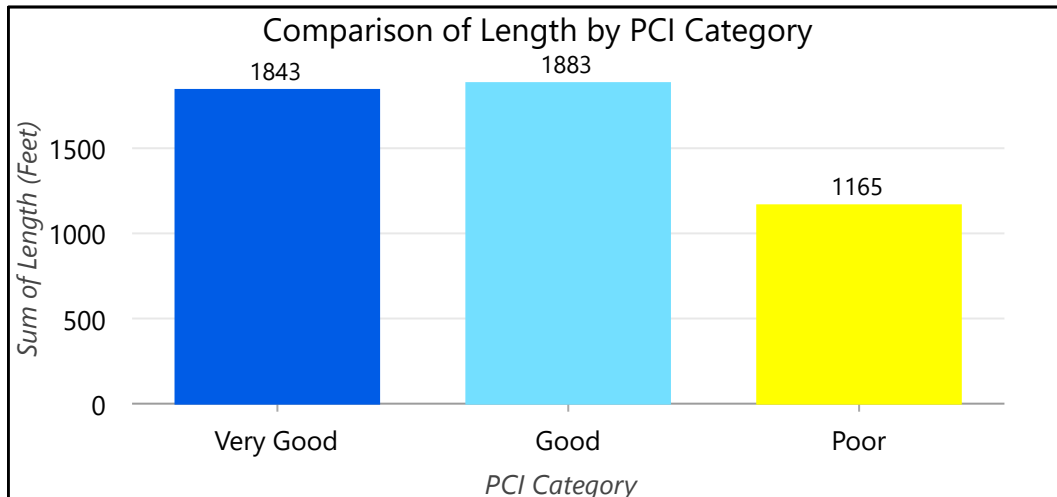
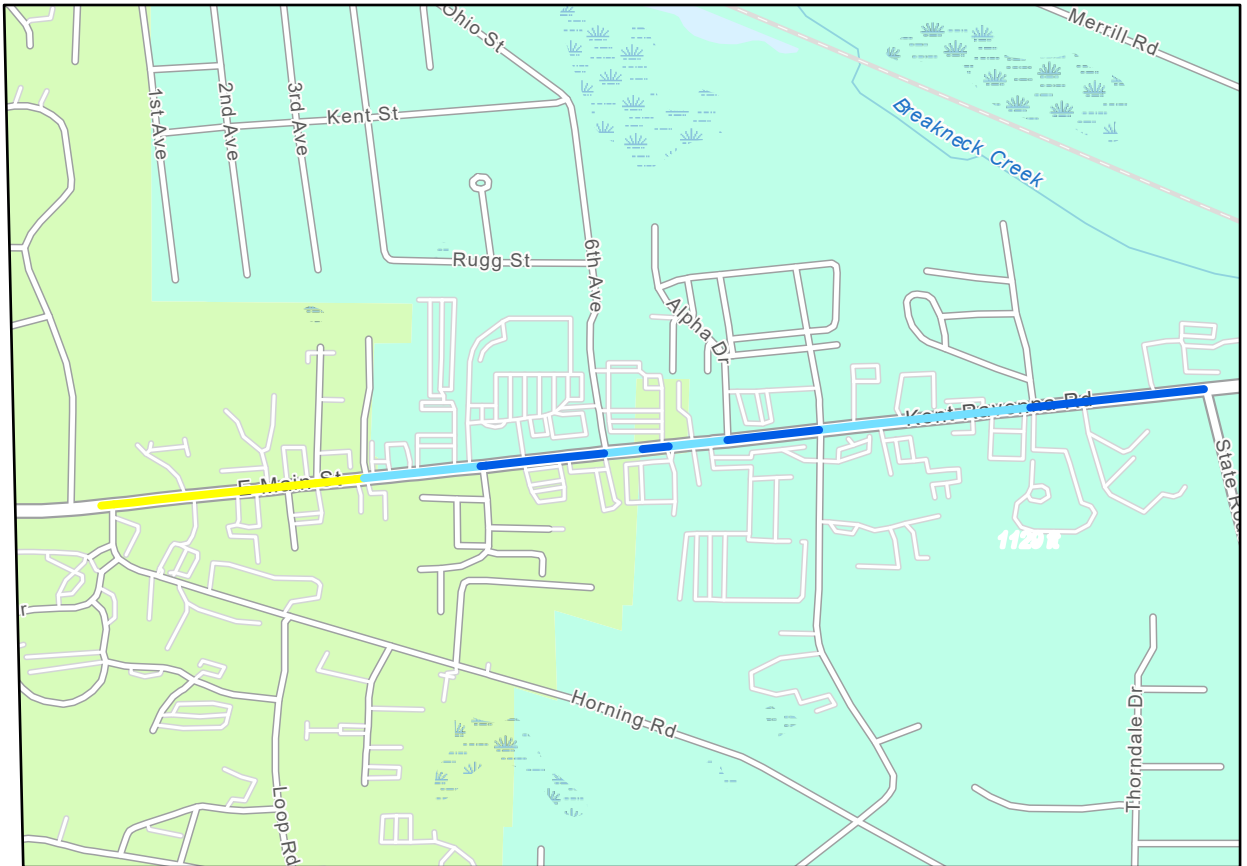
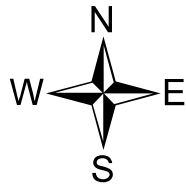
CONNECTING COMMUNITIES

2020 Planning Grant

PCI Values

PCI Category

- Very Good (82-91)
- Good (68-81)
- Poor (35-49)
- Franklin
- Kent



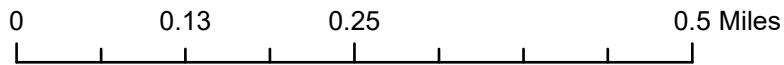
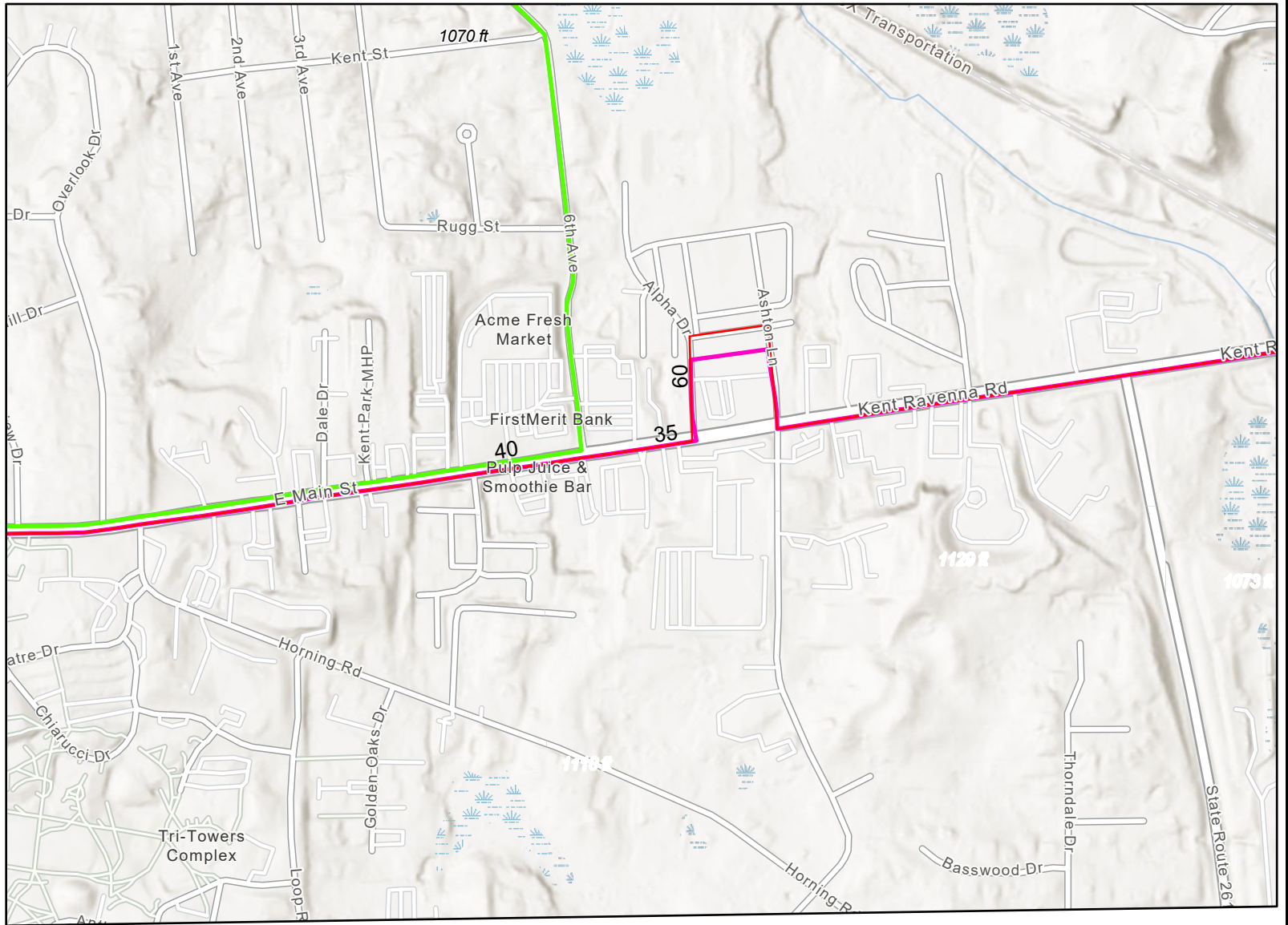
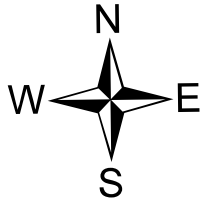
CONNECTING COMMUNITIES

2020 Planning Grant

Transit Map

RT_NO




- 35
- 40
- 60

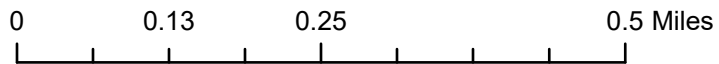
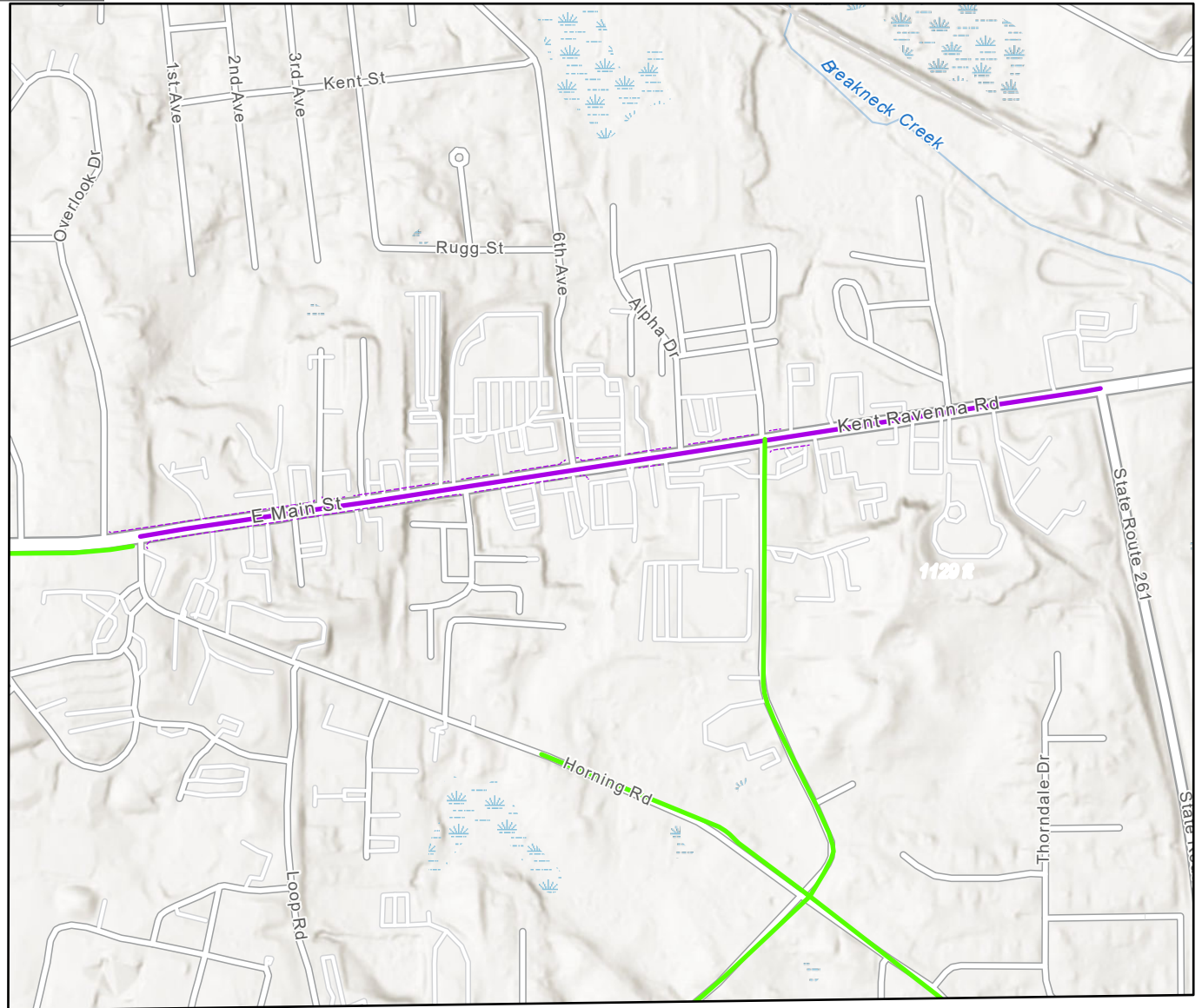
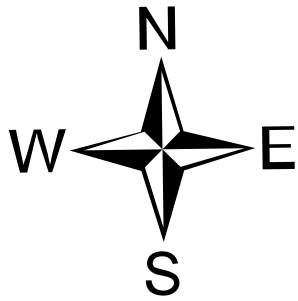


CONNECTING COMMUNITIES

2020 Planning Grant

Pedestrian and Bike Map

-  Study Area
-  Sidewalk
-  Bikeways

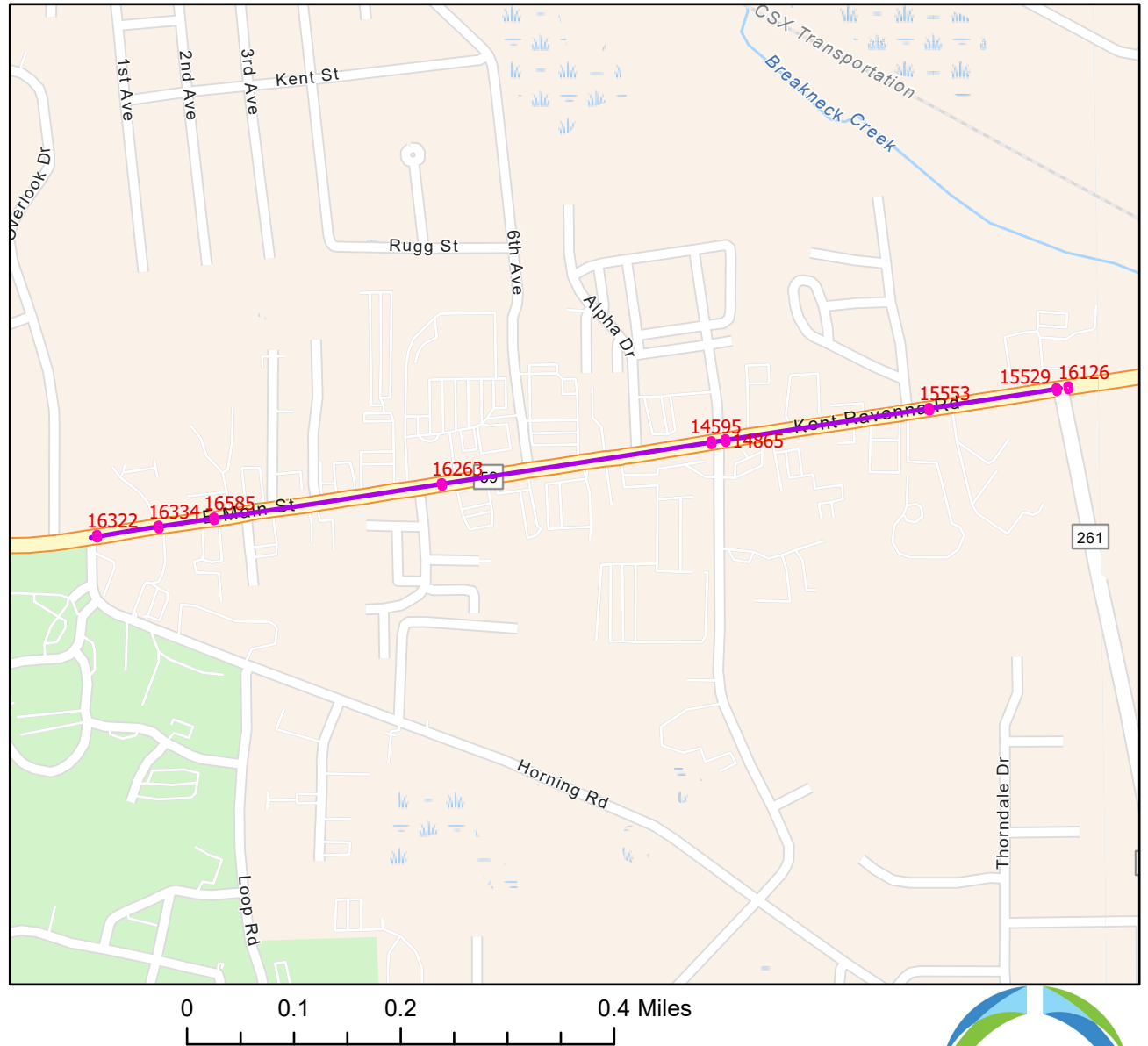
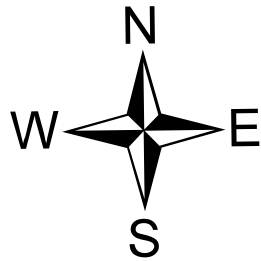


CONNECTING COMMUNITIES

2020 Planning Grant

Traffic Counts

- Study Area Corridor
- Streetlight 2020 AADT

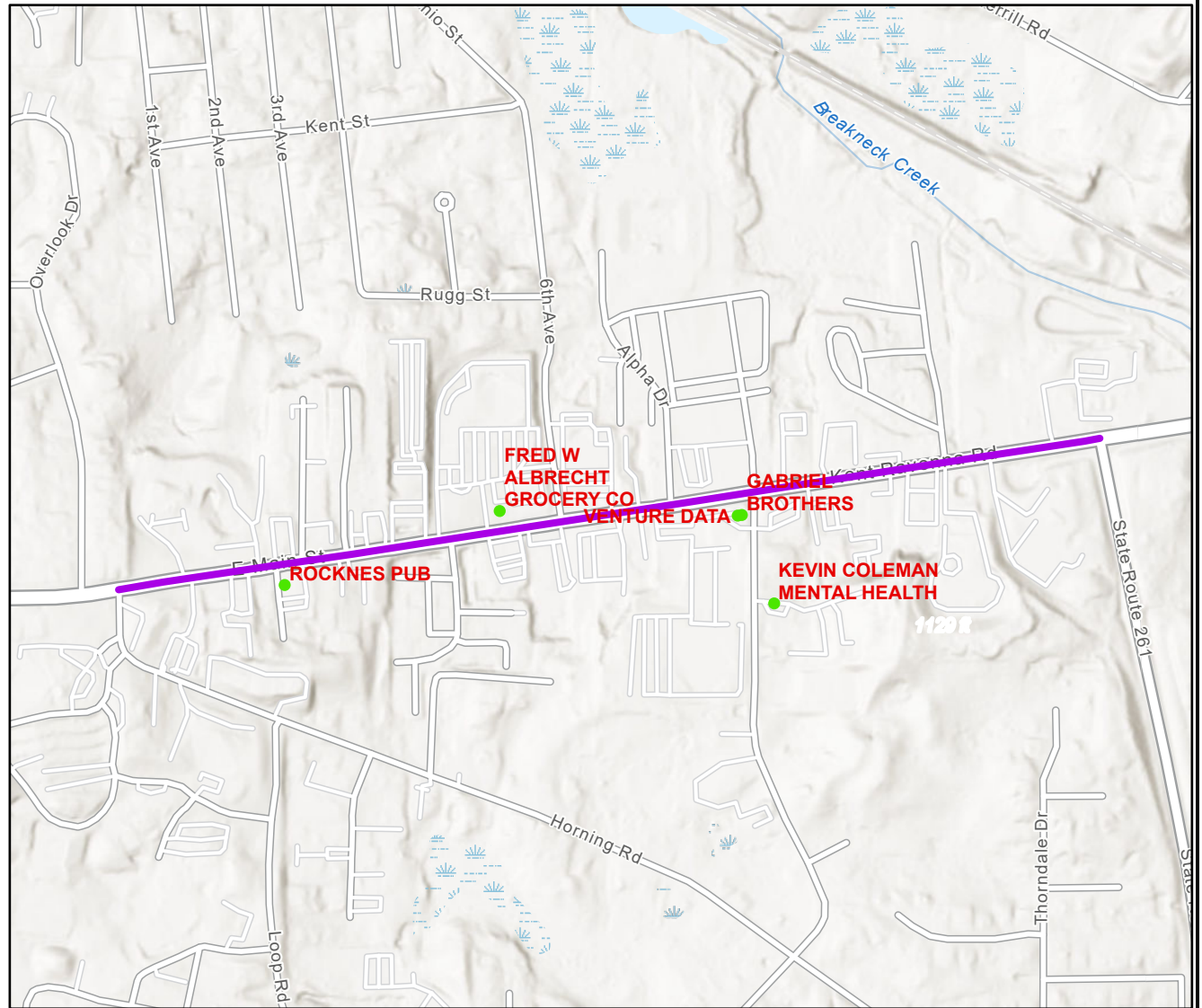
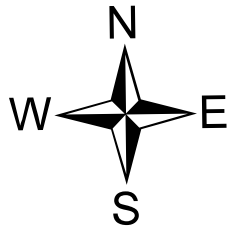


CONNECTING COMMUNITIES

2020 Planning Grant

Largest number of Employees

- Businesses
- Study Corridor



EMPLOYER
ROCKNES PUB
KEVIN COLEMAN MENTAL HEALTH
GABRIEL BROTHERS
FRED W ALBRECHT GROCERY CO
VENTURE DATA



Akron Metropolitan Area Transportation Study